

City of Manteca

Introduction to Redistricting

October 5, 2021

Doug Yoakam, Consultant
National Demographics Corporation

Redistricting Process

ATTACHMENT 1

Step	Description
Census Data Release August 16, 2021	Census Bureau releases official 2020 Census population data.
California Data Release September 20 & 27, 2021	California Statewide Database releases California's official 'prisoner-adjusted' 2020 redistricting data.
First Pre-draft hearing October 5, 2021	First Public Hearing to discuss redistricting process and answer questions from the public.
Public Workshop October 9, 2021 10:00 a.m.	First public workshop to demonstrate mapping tools and answer questions from the public.
Second Pre-draft hearing October 19, 2021	Second Public Hearing to hear from the public regarding neighborhoods and Communities of Interest.

Redistricting Process

ATTACHMENT 1

Step	Description
Public Workshop October 23, 2021 2:00 p.m.	Second public workshop to demonstrate mapping tools and answer questions from the public.
Virtual Public Workshop November 6, 2021 10:00 a.m.	Review of timeline, rules and laws , and a virtual demonstration of public mapping tools.
Deadline for map submission November 12, 2021	Deadline for public to submit maps. In order to process for November 23 rd hearing.
First post-draft-map hearing November 23, 2021	First Public Hearing to discuss and revise the draft maps and to discuss the election sequence.
Deadline for map submission November 29, 2021	Deadline for public to submit maps. In order to process for December 7 th hearing.
Second post-draft –map hearing & map adoption December 7, 2021	Public and Council deliberation on Map options. Council vote on preferred map.

Redistricting Rules and Goals ATTACHMENT 1

1. Federal Laws

Equal Population
Federal Voting Rights Act
No Racial Gerrymandering



2. California Criteria for Cities

1. **Geographically contiguous**
2. **Undivided neighborhoods and “communities of interest”**
(Socio-economic geographic areas that should be kept together)
3. **Easily identifiable boundaries**
4. **Compact**
(Do not bypass one group of people to get to a more distant group of people)

Prohibited: “Shall not favor or discriminate against a political party.”

3. Other Traditional Redistricting Principles

Minimize voters shifted to different election years
Respect voters’ choices / continuity in office
Future population growth
Preserving the core of existing districts

Manteca 2020 Census

Total Population:
83,740

Ideal District population:
16,740

Defining Neighborhoods

ATTACHMENT 1

1st Question: What is your neighborhood?

2nd Question: What are its geographic boundaries?

Examples of physical features defining a neighborhood boundary:

- Natural neighborhood dividing lines, such as highway or major roads, rivers, canals and/or hills
- Areas around parks or schools
- Other neighborhood landmarks

In the absence of public testimony, planning records and other similar documents may provide definition.



Beyond Neighborhoods:

Defining Communities of Interest

1st Question: What defines your community?

- Geographic Area, plus
- Shared issue or characteristic
 - Shared social or economic interest
 - Impacted by county policies
- Tell us “your community’s story”

2nd Question: Would this community benefit from being “included within a single district for purposes of its effective and fair representation”?

- Or would it benefit more from having multiple representatives?

Definitions of Communities of Interest may not include relationships with political parties, incumbents, or political candidates.

Beyond Neighborhoods: Communities

ATTACHMENT 1

Under the California Elections Code, “community of interest” has a very specific definition in the context of districting and redistricting cities and counties:

A “community of interest” is a population that shares common social or economic interests that should be included within a single district for purposes of its effective and fair representation.

Communities of interest do not include relationships with political parties, incumbents, or political candidates.

Public Mapping and Map Review Tools

ATTACHMENT 1

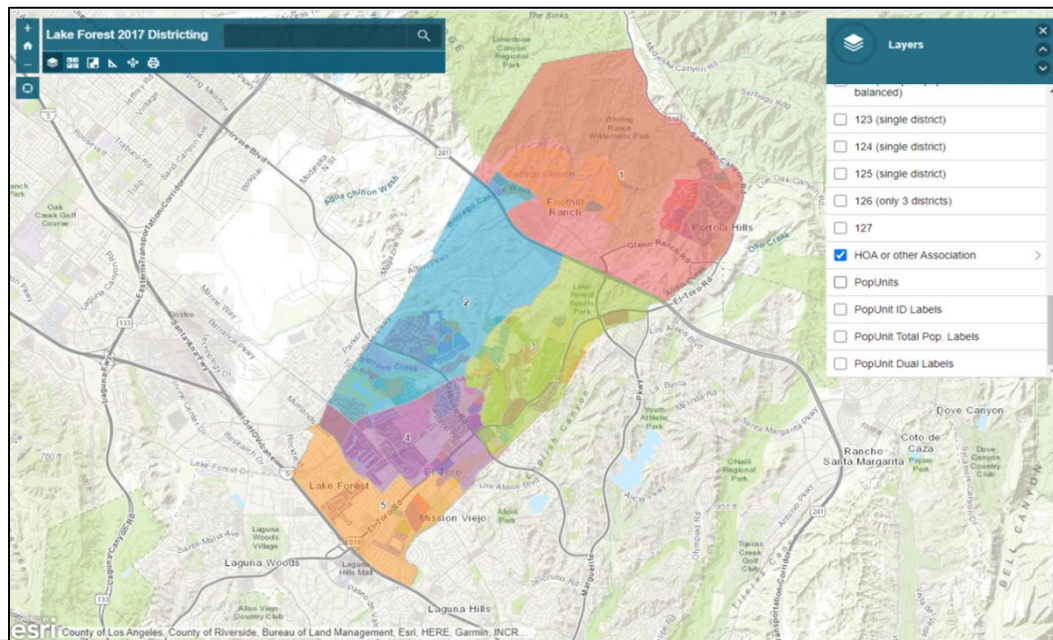
- Different tools for different purposes
- Different tools for different levels of technical skill and interest
 - Simple “review draft maps” tool
 - Easy-to-use “Draw your neighborhood” tool
 - Paper- and Excel-based simple “Draw a draft map” tool

Whether you use the powerful (but complicated) online mapping tool, Excel, the paper kit, or just draw on a napkin, we welcome your maps!

Simple Map Review Tool ATTACHMENT 1

Online Interactive Review Map

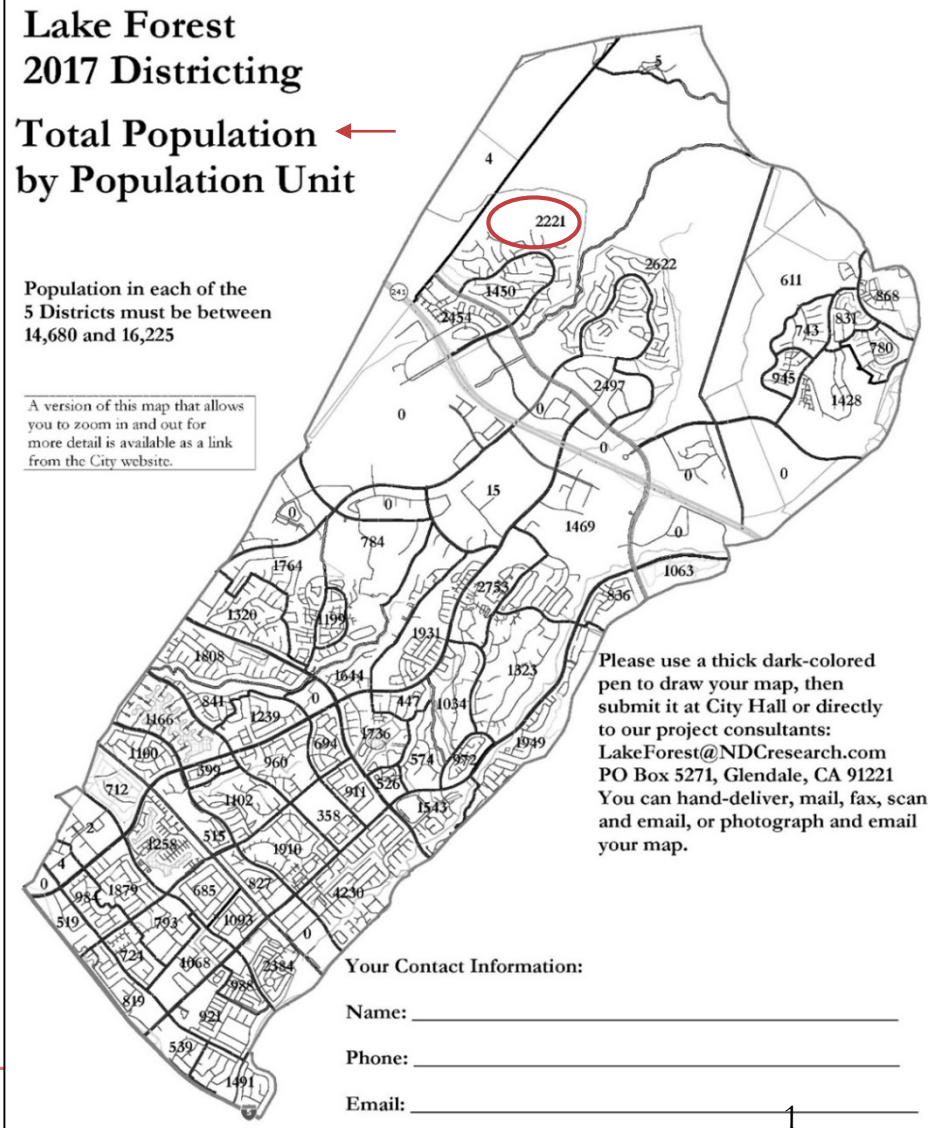
- ESRI's "ArcGIS Online" – similar to Google Maps in ease of use
- Used to review, analyze and compare maps, not to create them
- Includes overlays of "community of interest" and other data



ATTACHMENT 1

Paper “Public Participation Kit”

- For those without internet access or who prefer paper
- Total Population Counts only – no demographic numbers



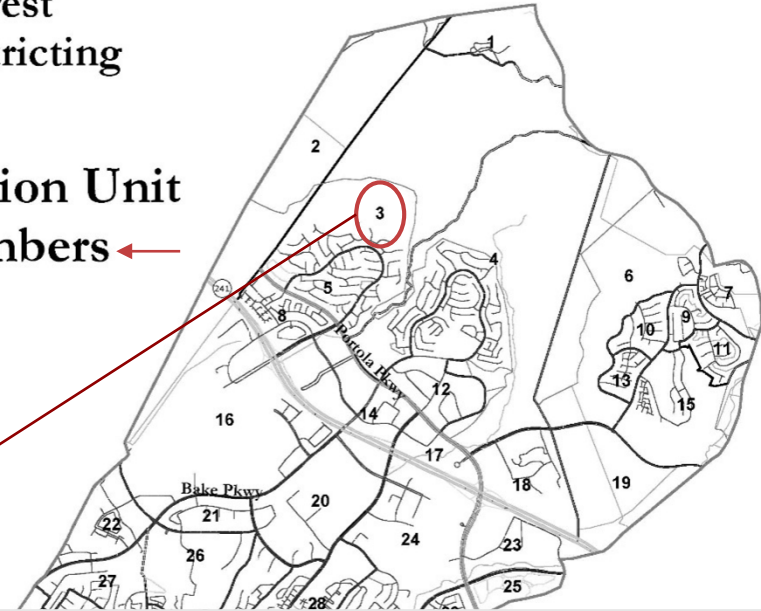
Simple Map Drawing Tool + Excel Supplement

“Public Participation Kit”

- For those who know Excel and do not wish to use online tools
- Adds CVAP data
- Excel does the math

Lake Forest 2017 Districting

Population Unit ID Numbers



AutoSave On Lake Forest 5-district Kit_ENG.xlsx Search

File Home Insert Page Layout Formulas Data Review View Help Acrobat

Paste Cut Copy Format Painter

Garamond 9 A⁺ A⁻ B I U Merge & Center \$ % € £ ¢

Font Alignment Number

A3

	A	B	C	D	E	F	G	H	I	J	K	L	M	N	O	P	Q	R	S	T	U	V	
1	Distict	Pop	Total Population					Voting Age Population					Citizen Voting Age Population					Nov. 2014 Registration					
2	(1-7)	Unit	Tot. Pop.	Hisp	NH Whit	NH Blk	NH Asn	total	Hisp	NH Whit	NH Blk	NH Asn	tot	Hisp	NH Whit	NH Blk	NH Asn	tot	latino	asn	fil	tot	
3	1	1,216	642	357	18	15	873	397	442	12	831	390	441	0	0	574	195	7	3	245	63		
4	2	2,367	1,028	1,053	43	96	1,784	741	899	74	1,915	730	1,140	0	45	1,299	435	14	7	555	140		
5	3	1,643	768	278	42	25	1,036	741	236	15	400	235	145	0	20	505	286	3	4	161	73		
6	4	1,768	734	855	62	84	1,272	464	685	62	1,231	461	639	19	111	1,022	366	11	11	391	89		
7	5	2,001	209	1,655	14	79	1,639	144	1,392	64	1,511	88	1,337	12	38	1,776	146	46	7	1,089	67		
8	6	612	56	499	4	39	517	37	440	26	471	22	423	3	15	525	38	15	2	337	18		
9	7	1,753	1,180	541	20	16	1,745	767	474	10	780	335	440	0	0	777	378	7	4	241	70		

		Ideal population: 15,314																				
		enter your name here																				
Group	Category	1	2	3	4	5	6	7	Unassigned	Total	1	2	3	4	5	6	7	Unassigned	Total			
	Tot. Pop.	0	0	0	0	0	0	0	107,197	107,197												
	Deviation from Ideal	-15,314	-15,314	-15,314	-15,314	-15,314	-15,314	-15,314	0	-100%	-100%	-100%	-100%	-100%	-100%	-100%	-100%	-100%	0.00%			
Total Population	Hisp	0	0	0	0	0	0	0	34,182	34,182	#DIV/0!	#DIV/0!	#DIV/0!	#DIV/0!	#DIV/0!	#DIV/0!	#DIV/0!	#DIV/0!	32%			
	NH Whit	0	0	0	0	0	0	0	64,294	64,294	#DIV/0!	#DIV/0!	#DIV/0!	#DIV/0!	#DIV/0!	#DIV/0!	#DIV/0!	#DIV/0!	60%			
	NH Blk	0	0	0	0	0	0	0	1,919	1,919	#DIV/0!	#DIV/0!	#DIV/0!	#DIV/0!	#DIV/0!	#DIV/0!	#DIV/0!	#DIV/0!	2%			
	NH Asn	0	0	0	0	0	0	0	4,550	4,550	#DIV/0!	#DIV/0!	#DIV/0!	#DIV/0!	#DIV/0!	#DIV/0!	#DIV/0!	#DIV/0!	4%			
	Total CVAP	0	0	0	0	0	0	0	83,090	83,090	#DIV/0!	#DIV/0!	#DIV/0!	#DIV/0!	#DIV/0!	#DIV/0!	#DIV/0!	#DIV/0!				
Voting Age Population	Hisp	0	0	0	0	0	0	0	22,928	22,928	#DIV/0!	#DIV/0!	#DIV/0!	#DIV/0!	#DIV/0!	#DIV/0!	#DIV/0!	#DIV/0!	21%			
	NH Whit	0	0	0	0	0	0	0	53,657	53,657	#DIV/0!	#DIV/0!	#DIV/0!	#DIV/0!	#DIV/0!	#DIV/0!	#DIV/0!	#DIV/0!	59%			
	NH Blk	0	0	0	0	0	0	0	3,401	3,401	#DIV/0!	#DIV/0!	#DIV/0!	#DIV/0!	#DIV/0!	#DIV/0!	#DIV/0!	#DIV/0!	2%			
	NH Asn	0	0	0	0	0	0	0	77,063	77,063	#DIV/0!	#DIV/0!	#DIV/0!	#DIV/0!	#DIV/0!	#DIV/0!	#DIV/0!	#DIV/0!	93%			
Citizen Voting Age Population	Total CVAP	0	0	0	0	0	0	0	18,936	18,936	#DIV/0!	#DIV/0!	#DIV/0!	#DIV/0!	#DIV/0!	#DIV/0!	#DIV/0!	#DIV/0!				
	Hisp	0	0	0	0	0	0	0	52,843	52,843	#DIV/0!	#DIV/0!	#DIV/0!	#DIV/0!	#DIV/0!	#DIV/0!	#DIV/0!	#DIV/0!	49%			
	NH Whit	0	0	0	0	0	0	0	1,673	1,673	#DIV/0!	#DIV/0!	#DIV/0!	#DIV/0!	#DIV/0!	#DIV/0!	#DIV/0!	#DIV/0!	2%			
	NH Blk	0	0	0	0	0	0	0	2,630	2,630	#DIV/0!	#DIV/0!	#DIV/0!	#DIV/0!	#DIV/0!	#DIV/0!	#DIV/0!	#DIV/0!	14%			
Nov. 2014 Registration	NH Asn	0	0	0	0	0	0	0	63,996	63,996	#DIV/0!	#DIV/0!	#DIV/0!	#DIV/0!	#DIV/0!	#DIV/0!	#DIV/0!	#DIV/0!	338%			
	Total Reg.	0	0	0	0	0	0	0	13,574	13,574	#DIV/0!	#DIV/0!	#DIV/0!	#DIV/0!	#DIV/0!	#DIV/0!	#DIV/0!	#DIV/0!				
	Latino	0	0	0	0	0	0	0	1,100	1,100	#DIV/0!	#DIV/0!	#DIV/0!	#DIV/0!	#DIV/0!	#DIV/0!	#DIV/0!	#DIV/0!	8%			
	Asian-American	0	0	0	0	0	0	0	463	463	#DIV/0!	#DIV/0!	#DIV/0!	#DIV/0!	#DIV/0!	#DIV/0!	#DIV/0!	#DIV/0!	3%			
Nov. 2014 Votes	Filipino	0	0	0	0	0	0	0	30,448	30,448	#DIV/0!	#DIV/0!	#DIV/0!	#DIV/0!	#DIV/0!	#DIV/0!	#DIV/0!	#DIV/0!	28%			
	Total Votes	0	0	0	0	0	0	0	4,317	4,317	#DIV/0!	#DIV/0!	#DIV/0!	#DIV/0!	#DIV/0!	#DIV/0!	#DIV/0!	#DIV/0!				
	Latino	0	0	0	0	0	0	0	461	461	#DIV/0!	#DIV/0!	#DIV/0!	#DIV/0!	#DIV/0!	#DIV/0!	#DIV/0!	#DIV/0!	0%			
	Asian-American	0	0	0	0	0	0	0	181	181	#DIV/0!	#DIV/0!	#DIV/0!	#DIV/0!	#DIV/0!	#DIV/0!	#DIV/0!	#DIV/0!	4%			
	Filipino	0	0	0	0	0	0	0	164	164	#DIV/0!	#DIV/0!	#DIV/0!	#DIV/0!	#DIV/0!	#DIV/0!	#DIV/0!	#DIV/0!	4%			
33 Submitter's Comments about the plan:																						
34 I think this map makes sense because ...																						
35																						
36																						
37																						
38																						
39																						
40																						
41																						
42																						
43																						
44																						
45																						
46																						
47																						
48																						
49																						
50																						
51																						
52																						
53																						
54																						
55																						
56																						
57																						
58																						
59																						
60																						
61																						
62																						
63																						
64																						
65																						
66																						
67																						
68																						
69																						
70																						

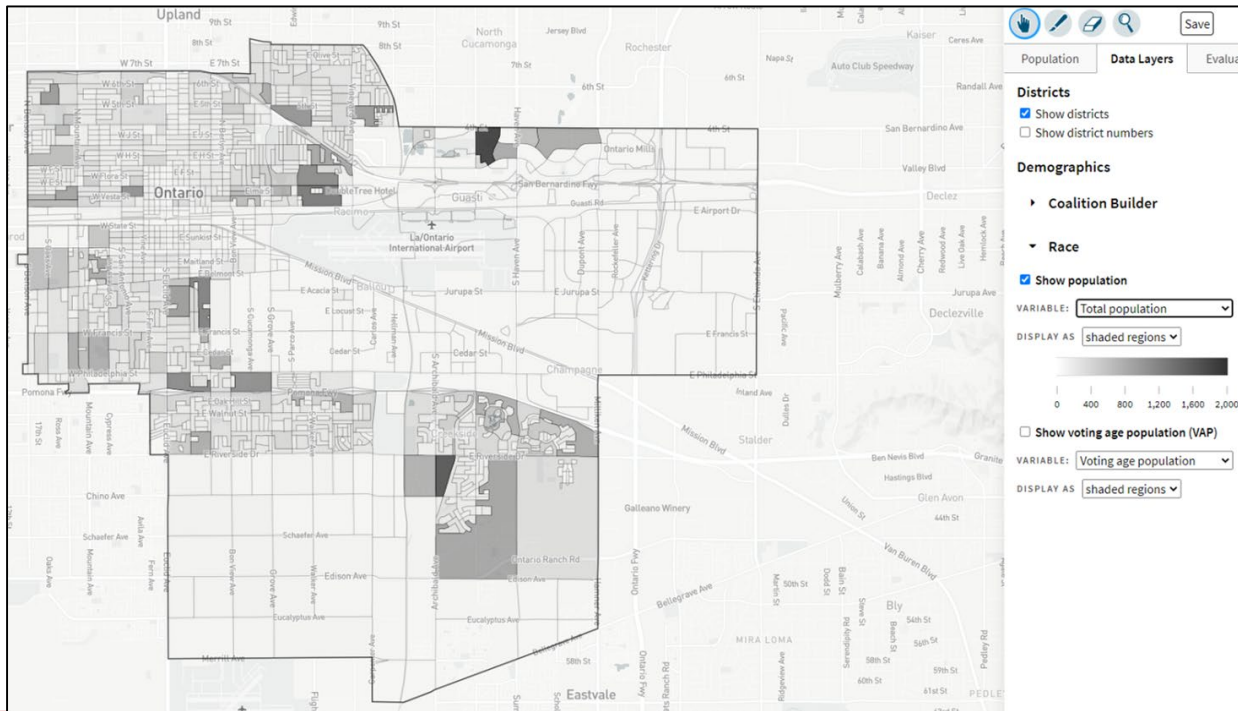
InstructionsAssignments7-district balance

October 5, 2021

October 5, 2021

“Draw Your Community of Interest” focus

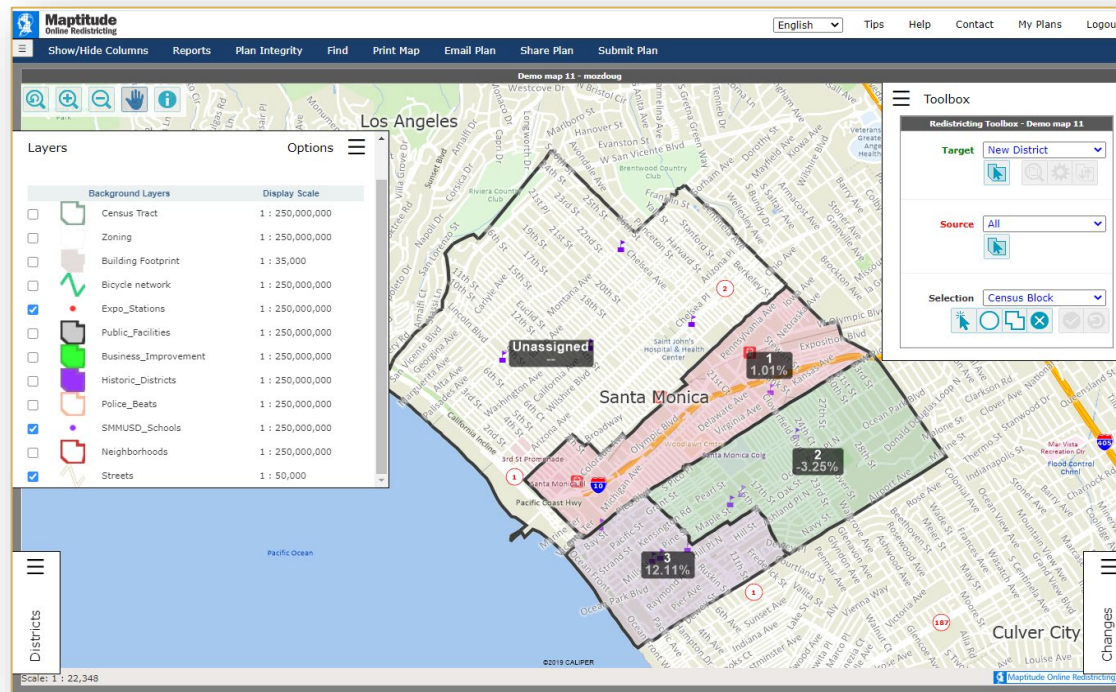
- Also includes simple district-mapping tool
- Only available in English



Caliper's Maptitude Online Redistricting

Full Database, Powerful Online Mapping Tool

- ❑ Powerful, common, data-rich online tool
- ❑ Six language options: English, Spanish, Portuguese, Vietnamese, Mandarin and Korean



Share Your Thoughts

ATTACHMENT 1

Website

Districtingmanteca.org

Phone

209-456-8017

Email

districtingmanteca@mantecagov.com

City of Manteca - District Formation

Outreach & Engagement Efforts

Agenda

- Outreach & engagement efforts to date
 - Timeline & approach
 - Multimedia outreach – digital, print, phone, etc.
 - New dedicated website
 - Market on Maple/Pumpkin Fair
- Outreach & engagement moving forward
 - Workshops and additional hearings
 - Continued engagement publicizing each milestone in the process



Outreach & Engagement Efforts to Date

Timeline & Approach

- Timeline
 - Delayed availability of Census data
 - Goal of completing process in early 2022
 - Speedy, clear communications necessary
- Approach
 - Multiple languages
 - Multimedia approach

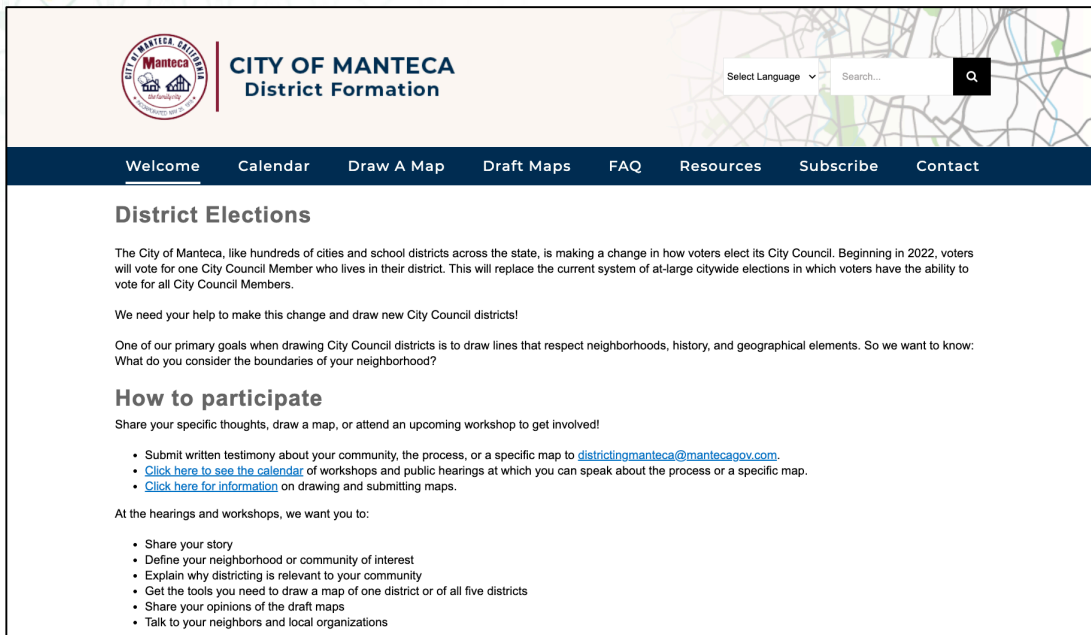


Multimedia Outreach

- Digital
 - Website
 - Emails
 - Social media
 - Press release to online media outlets
- Print
 - Flyers
 - Press release to print media outlets
- Phone
 - Phone calls to community groups



Dedicated Website



DistrictingManteca.org, which launched Sept. 21, is continuously updated with information & resources.

Includes **Subscribe** option to sign up for email updates & **Contact** tab to share feedback



Market on Maple/Pumpkin Fair



HELP SHAPE MANTECA'S FUTURE

Participate in the Process of Drawing District Boundaries for the City of Manteca

Join us at a Public Hearing or Community Workshop to get involved!

October 2021 **November 2021** **December 2021**

- October 5** Public Hearing 1*
- October 9** Community Workshop 1**
- October 19** Public Hearing 2*
- October 23** Community Workshop 2**
- November 6** Community Workshop 3** (Virtual Only)
- November 23** Public Hearing 3*
- December 7** Public Hearing 4*

All meetings, except the November 6 Virtual-Only Community Workshop, will take place in the Manteca City Council Chambers (1001 W Center St, Manteca, CA 95337) and via Zoom

*Zoom Info for Public Hearings: Meeting ID: 826 7726 8640, Phone number: +1 669 900 6833

**Zoom Info for Community Workshops: Webinar ID: 819 2041 7621, Passcode: 812083, Phone number: +1 669 900 6833

We want you to weigh in on how district lines should be drawn by sharing your thoughts on Communities of Interest, submitting your own proposed maps and reviewing draft maps.

For additional details and tools to help you participate, visit districtingmanteca.org or call 209-456-8017




- City staff conducted outreach at booths Sept. 23 and Oct. 2

Flyer distributed to community members



TRIPEPI SMITH



Outreach & Engagement Moving Forward

Moving Forward

- Community Workshops
 - October 9, 10 a.m. (Hybrid)
 - October 23, 2 p.m. (Hybrid)
 - November 6, 10 a.m. (Virtual Only)
- Due dates for draft map submissions
 - November 12 by 6 p.m. (for consideration at Public Hearing 3)
 - November 29 by 6 p.m. (for consideration at Public Hearing 4)
- Continued engagement publicizing each milestone in the process
 - Will continue to publicize each subsequent hearing and public workshop to continue spreading the word





Questions?