

City of Manteca Community Workshop on District Formation

October 9, 2021

Ryder Todd Smith, President, Tripepi Smith
Doug Yoakam, Consultant, National Demographics Corporation

Hybrid Meeting: Both In-Person and Zoom Participants

Meeting is Being Recorded

Logistics and Amenities

Introductions

Today's Goals

You Learn From the Experts

Experts Listen to *You*

You Leave Empowered to Give Effective Feedback

Why You Should Care

- ❑ Democracy works better when people are engaged.
- ❑ You are experts on the community.
- ❑ You are an expert about your neighborhood.
- ❑ A once in a decade opportunity.

Today's Schedule

AGENDA: 10 a.m – 12 p.m

Process, Rules and Goals

Neighborhoods/Communities of Interest

Public Mapping and Map Review Tools

Next Steps

Districting Process

Step	Description
Census Data Release August 16, 2021	Census Bureau releases official 2020 Census population data.
California Data Release September 20 & 27, 2021	California Statewide Database releases California's official 'prisoner-adjusted' 2020 redistricting data.
First Pre-draft hearing October 5, 2021 7:10 p.m.	First Public Hearing to discuss districting process and answer questions from the public.
Public Workshop October 9, 2021 10:00 a.m.	First public workshop to demonstrate mapping tools and answer questions from the public.
Second Pre-draft hearing October 19, 2021 7:10 p.m.	Second Public Hearing to hear from the public regarding neighborhoods and Communities of Interest.

Districting Process

Step	Description
Public Workshop October 23, 2021 2:00 p.m.	Second public workshop to demonstrate mapping tools and answer questions from the public.
Virtual Public Workshop November 6, 2021 10:00 a.m.	Review of timeline, rules and laws , and a virtual demonstration of public mapping tools.
First deadline for map submission November 12, 2021	Deadline for public to submit maps. In order to process for November 23 rd hearing.
First post-draft-map hearing November 23, 2021 7:10 p.m.	First post-map Public Hearing to discuss and revise the draft maps and to discuss the election sequence.
Second deadline for map submission November 29, 2021	Deadline for public to submit maps. In order to process for December 7 th hearing.
Second post-draft –map hearing & map adoption December 7, 2021 7:10 p.m.	Public and Council deliberation on Map options. Council vote on preferred map.

Districting Rules and Goals

1. Federal Laws

Equal Population
Federal Voting Rights Act
No Racial Gerrymandering



2. California Criteria for Cities

1. **Geographically contiguous**
2. **Undivided neighborhoods and “communities of interest”**
(Socio-economic geographic areas that should be kept together)
3. **Easily identifiable boundaries**
4. **Compact**
(Do not bypass one group of people to get to a more distant group of people)

Prohibited: “Shall not favor or discriminate against a political party.”

3. Other Traditional Redistricting Principles

Respect voters’ choices / continuity in office
Future population growth

Manteca 2020 Census

Total Population:
83,740

Ideal District population:
20,935

Defining Neighborhoods

1st Question: What is your neighborhood?

2nd Question: What are its geographic boundaries?

Examples of physical features defining a neighborhood boundary:

- Natural neighborhood dividing lines, such as highway or major roads, rivers, canals and/or hills
- Areas around parks or schools
- Other neighborhood landmarks

In the absence of public testimony, planning records and other similar documents may provide definition.



Beyond Neighborhoods: Defining Communities of Interest

1st Question: What defines your community?

- Geographic Area, plus
- Shared issue or characteristic
 - Shared social or economic interest
 - Impacted by city policies
- Tell us “your community’s story”

2nd Question: Would this community benefit from being “included within a single district for purposes of its effective and fair representation”?

- Or would it benefit more from having multiple representatives?

Definitions of Communities of Interest may not include relationships with political parties, incumbents, or political candidates.

Your Turn

What is your neighborhood and what are its boundaries?

What other notable areas are in the City, and what are their boundaries?

Discussion to identify areas that meet each AB 849 definition:

- “neighborhoods”
- “communities of interest . . . that should be included within a single district for purposes of its effective and fair representation.”

Your Turn – Communities of Interest

- ❑ Who is a part of your community?
- ❑ What are some meaningful places your community recognizes or gathers at?
- ❑ What are some common concerns you share with a group?
- ❑ What are some common cultural characteristics that unite a community?
- ❑ What are common work-related traits that bring a community together ?
- ❑ What is significant about the physical environment?
- ❑ What areas benefit from staying together in a district?

*Your thoughts and ideas will become part of
the record and be recorded / written down*

Public Mapping and Map Review Tools

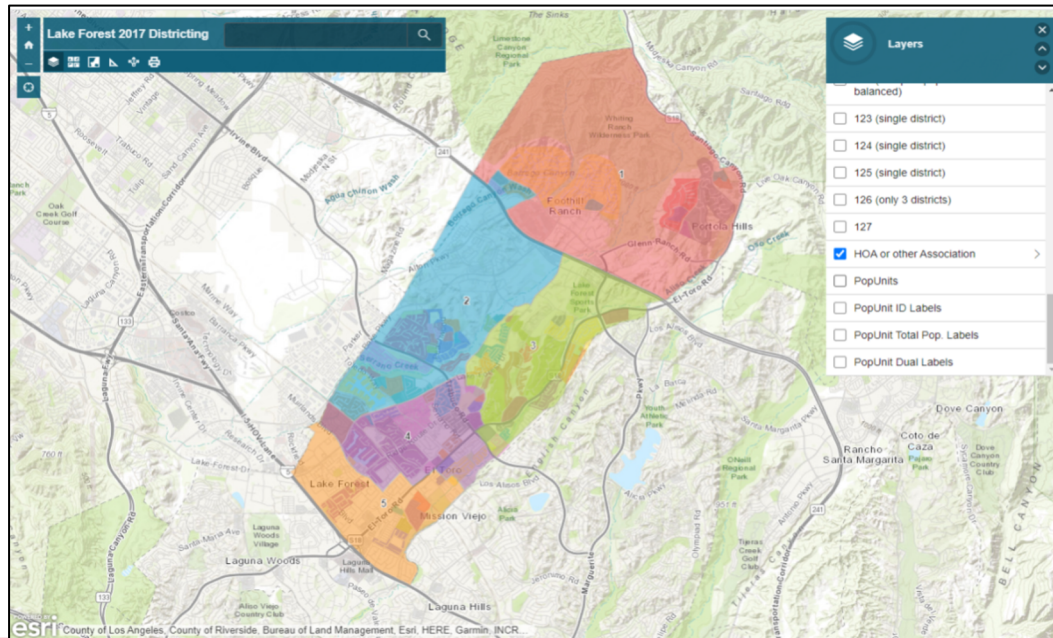
- Different tools for different purposes
- Different tools for different levels of technical skill and interest
 - Simple “review draft maps” tool
 - Easy-to-use “Draw your neighborhood” tool
 - Paper- and Excel-based simple “Draw a draft map” tool

Whether you use the powerful (but complicated) online mapping tool, Excel, the paper kit, or just draw on a napkin, we welcome your maps!

Simple Map Review Tool

Online Interactive Review Map

- ESRI's "ArcGIS Online" – similar to Google Maps in ease of use
- Used to review, analyze and compare maps, not to create them
- Includes overlays of “community of interest” and other data



Paper “Public Participation Kit”

- ## Total Population by Population Unit

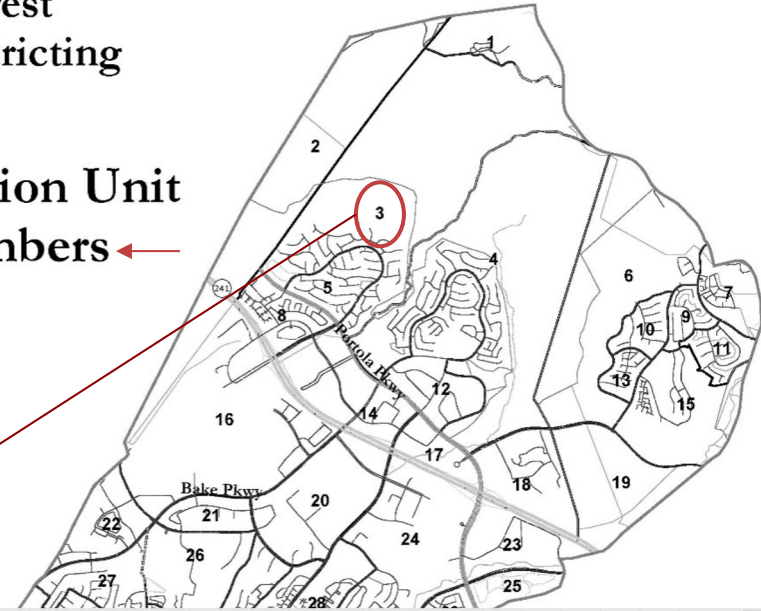
A version of this map that allows you to zoom in and out for more detail is available as a link from the City website.

Email: _____

“Public Participation Kit”

- # Lake Forest 2017 Districting

Population Unit ID Numbers

[illegible]

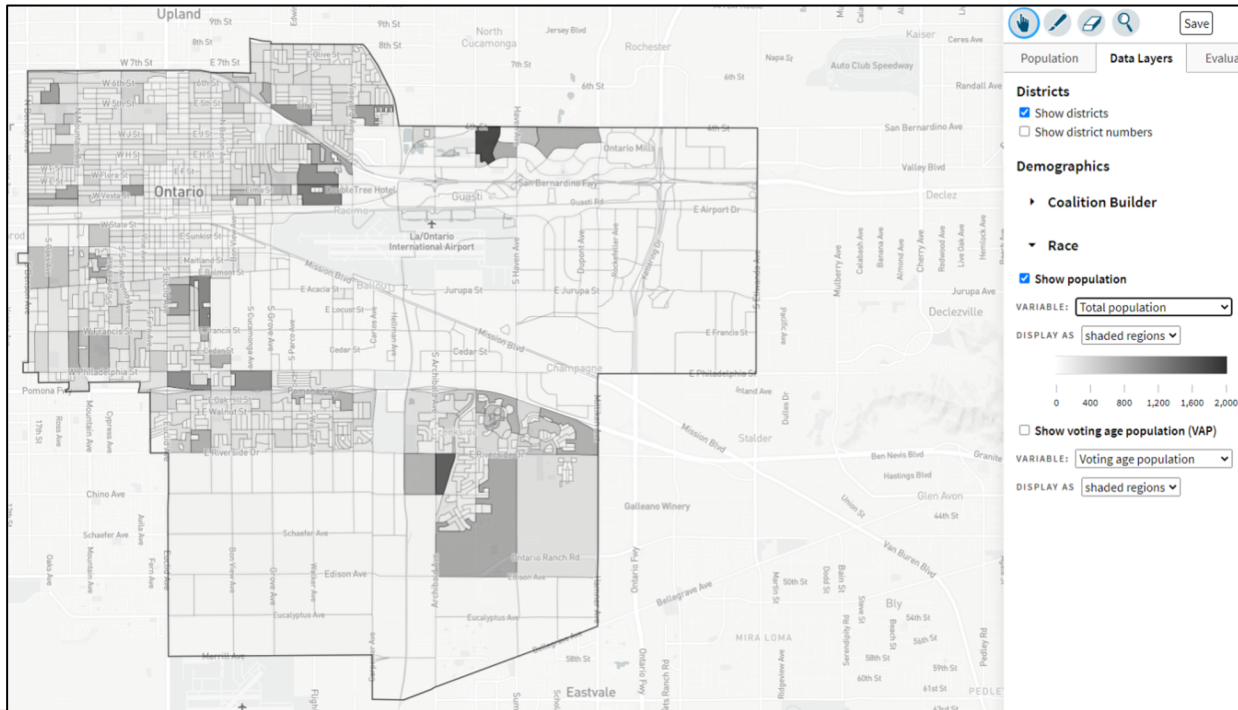
33 Submitter's Comments about the plan

34 I think this map makes sense because . . .

DistrictR

“Draw Your Community of Interest” focus

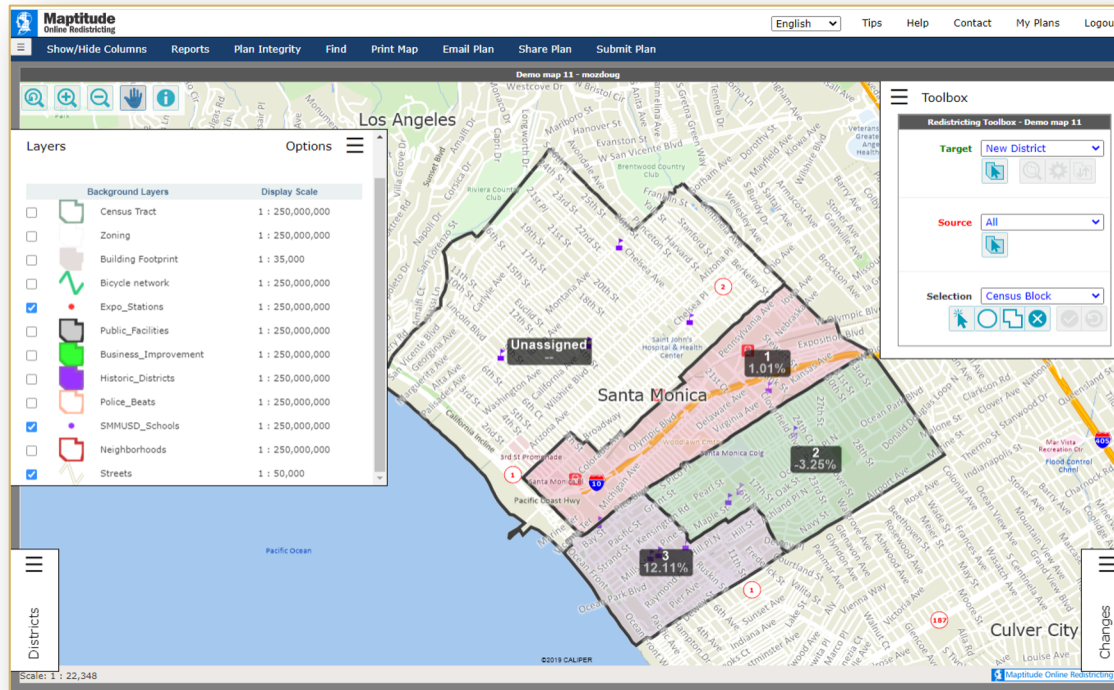
- Also includes simple district-mapping tool
- Only available in English



Caliper's Maptitude Online Districting

Full Database, Powerful Online Mapping Tool

- ❑ Powerful, common, data-rich online tool
- ❑ Six language options: English, Spanish, Portuguese, Vietnamese, Mandarin and Korean



Q&A With Your Hosts

Next Steps

Step	Description
Second Pre-draft hearing October 19 (7:10 p.m.)	Second Public Hearing to hear from the public regarding neighborhoods and Communities of Interest.
Public Workshop October 23 (2:00 p.m.)	Second public workshop to demonstrate mapping tools and answer questions from the public.
Virtual Public Workshop November 6 (10:00 a.m.)	Review of timeline, rules and laws , and a virtual demonstration of public mapping tools.
First deadline for maps November 12	Deadline for public to submit maps. In order to process for November 23 rd hearing.
First post-draft-map hearing November 23 (7:10 p.m.)	First post-map Public Hearing to discuss and revise the draft maps and to discuss the election sequence.
Second deadline for maps November 29	Deadline for public to submit maps. In order to process for December 7th hearing.
Second post-draft –map hearing & map adoption December 7 (7:10 p.m.)	Public and Council deliberation on Map options. Council vote on preferred map.

Share Your Thoughts/Continue Engagement



Website: [Districtingmanteca.org](https://districtingmanteca.org)

Email: districtingmanteca@mantecagov.com

Phone: 209-456-8017